

XYRCOS® & XYClone®

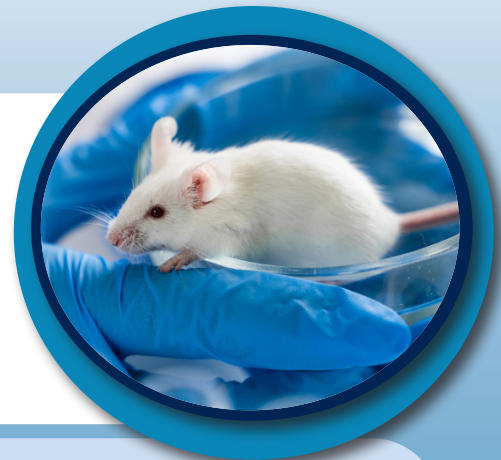
Fixed and Moveable Research Laser Systems

LASERS FOR DEVELOPMENTAL BIOLOGY

OVERVIEW

XYRCOS and XYClone research lasers are for research purposes only.

Hamilton Thorne provides easy-to-use laser systems for your research facility. Choose between a standard fixed or moveable laser to fit your needs. Our lasers have been used worldwide in a variety of applications including assisted hatching, cloning/SCNT, laser-targeted cell ablation, fertilization of genetically modified lines, and more!



XYRCOS DTS MOVEABLE LASER

XYRCOS DTS research laser is for research purposes only.

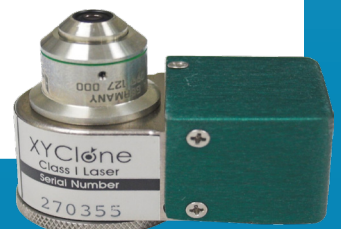
XYRCOS with DTS provides computer-controlled accuracy and ease of use with advanced targeting features such as single shot, line/curve, multipoint, rectangle, and circular arc. Use the XYRCOS with DTS for fast and easy cell separation in various developmental biology procedures. Available in 40x objective.



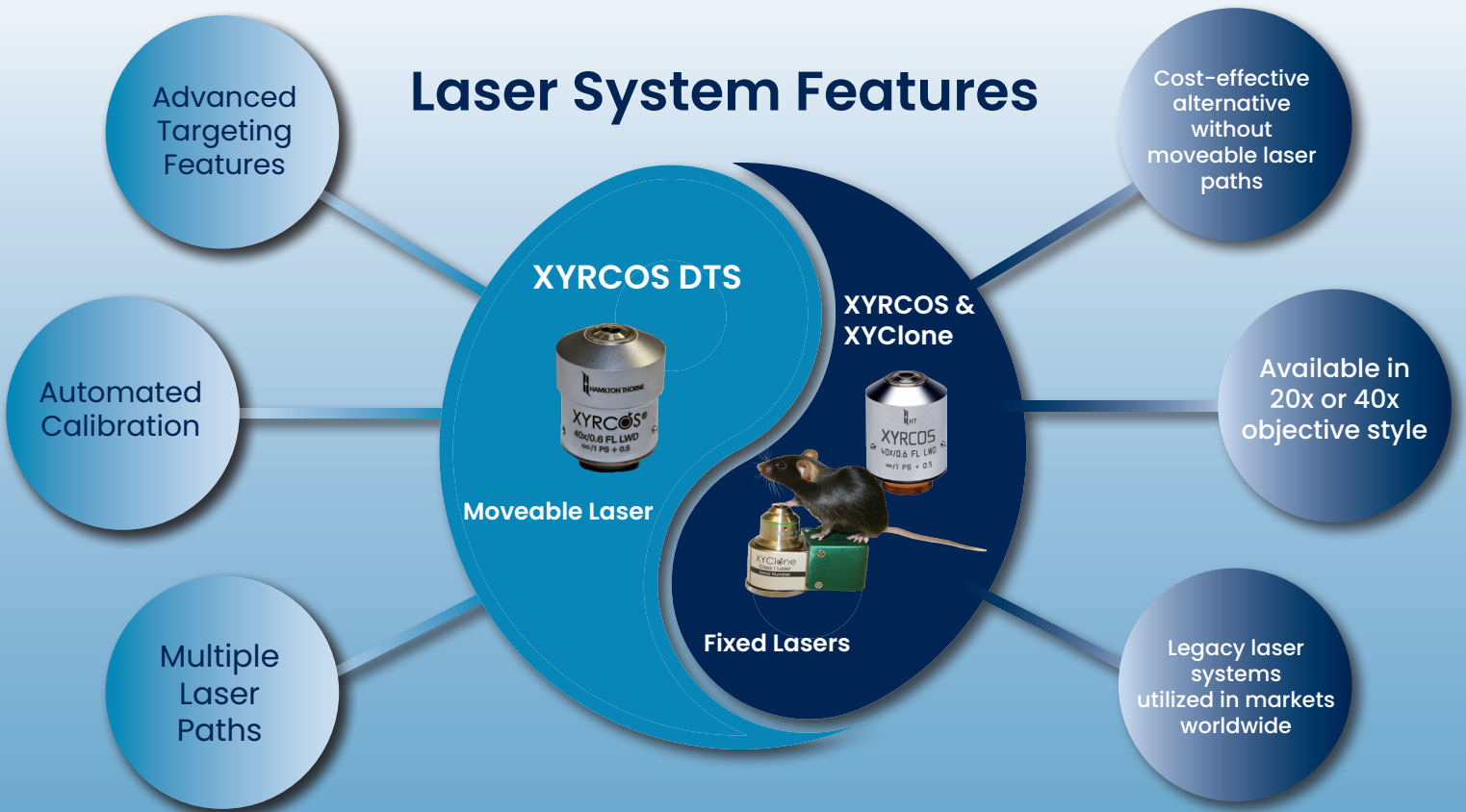
XYRCOS and XYClone FIXED LASERS

XYRCOS and XYClone research lasers are for research purposes only.

The XYRCOS is equipped with the RED-i target locator visible through the microscope eyepieces and staccato mode for firing pulses in rapid succession. The legacy XYClone is a cost-effective alternative. Available in 40x or 20x objective.



Laser System Features



Key Features

- Available as fixed or moveable laser system
- Fire laser by mouse or foot switch remote
- No laser realignment required
- Fast installation and simple set-up



Technical Specifications

- 1460 nm, Infrared Solid-State Diode
- Maximum Power: @ Focus = 300 mW (Class I)
- Pulse length : 1 – 3000 μ s
- 40x objective or 20x objective (fixed lasers only)



Contact our team to transform your lab today!

Hamilton Thorne Inc.
100 Cummings Center Suite 465E
Beverly, MA, 01915, USA
978-921-2050
www.hamiltonthorne.com



Visit our website!