

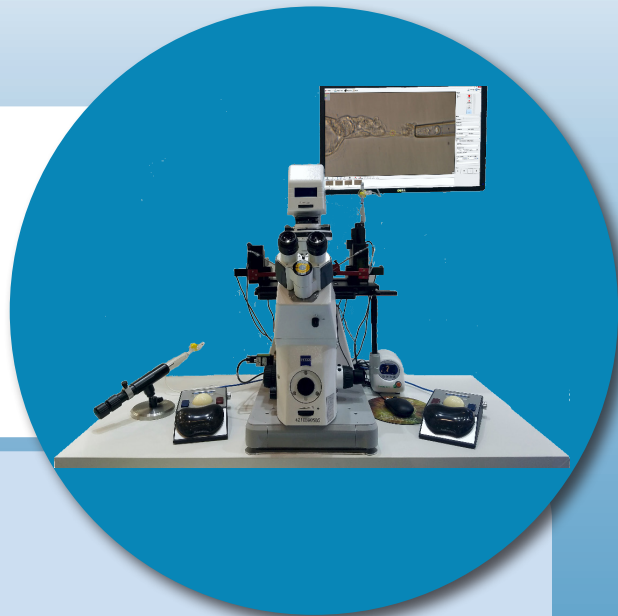
LYKOS® & ZILOS-tk®

Fixed and Moveable Laser Systems

LASER-ASSISTED HATCHING AND EMBRYO BIOPSY

OVERVIEW

Hamilton Thorne provides easy-to-use laser systems for embryo biopsy and laser-assisted hatching in the ART facility. Our lasers are 40x objective, high-power Class 1, 1460 nm with a choice between a fixed or moveable laser system.



LYKOS DTS MOVEABLE LASER

LYKOS with DTS provides computer-controlled accuracy and ease of use with advanced targeting features such as single shot, line/curve, multipoint, and more! Use the LYKOS with DTS for fast and easy cell separation in ART procedures.

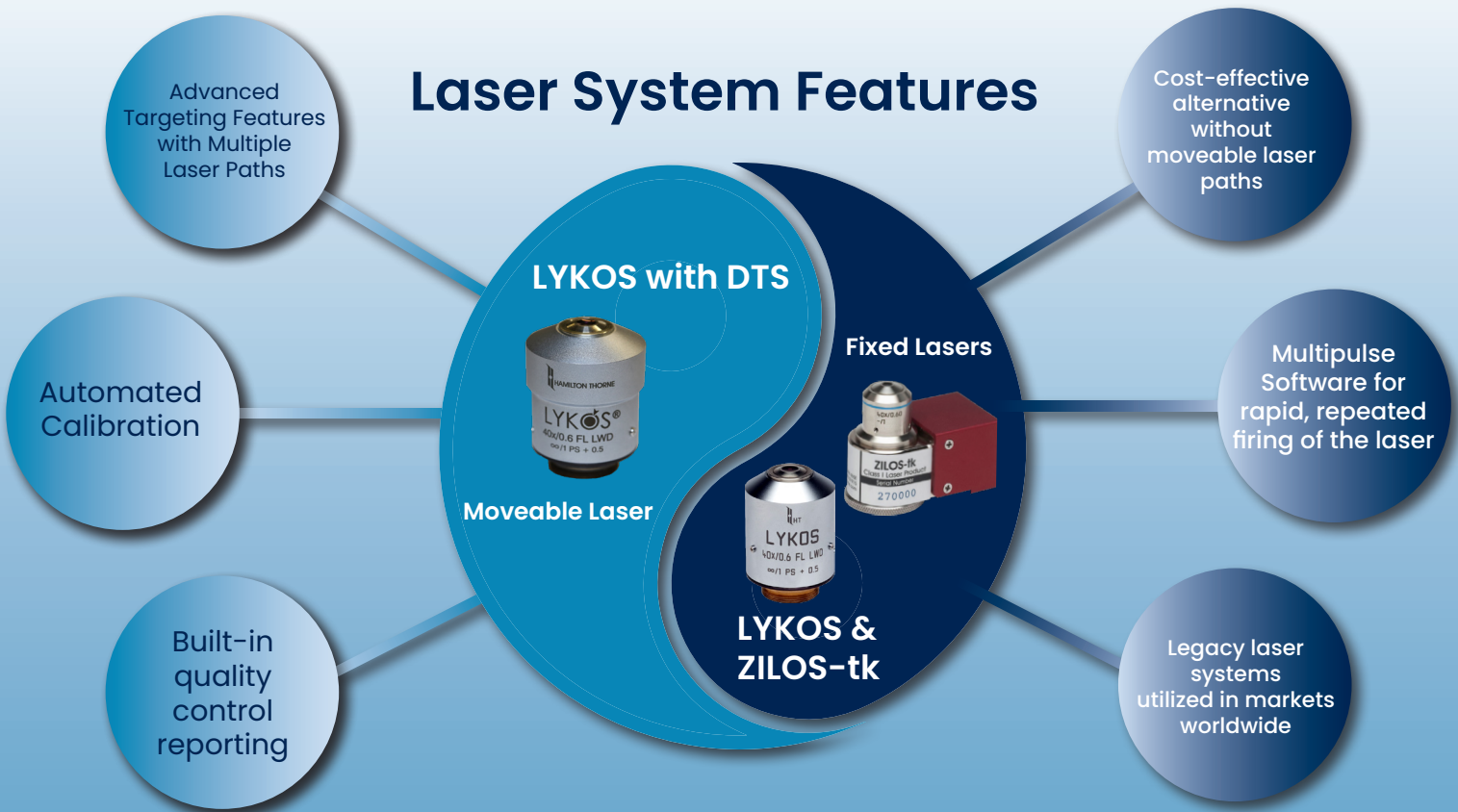


LYKOS / ZILOS-tk FIXED LASERS

The LYKOS is equipped with the RED-i target locator visible through the microscope eyepieces and multipulse mode for firing pulses in rapid succession. The legacy ZILOS-tk is a cost-effective alternative without RED-i or multipulse features.



Laser System Features



Key Features

- Available as fixed or moveable laser system
- Fire laser by mouse or foot switch remote
- No laser realignment required
- Fast installation and simple set-up



Technical Specifications

- 1460 nm, Infrared Solid-State Diode
- Maximum Power: @ Focus = 300 mW (Class I)
- Pulse length : 1 – 3000 μ s
- 40x objective

Contact our team to transform your lab today!

Hamilton Thorne Inc.
100 Cummings Center Suite 465E
Beverly, MA, 01915, USA
978-921-2050
www.hamiltonthorne.com



Visit our website!