

PERMANENT EMBRYO MONITORING SYSTEM*

PRIMO VISION

- ✓ Compact > 220 mm x 80 mm x 110 mm
- ✓ Expandable > 'one camera per patient'
- ✓ Safe > no lubrication, no continuous electric currents, no heat, no embryo movement

PRIMO Vision System includes

- > a compact, inverted digital microscope (PRIMO Vision) to be used inside of the incubator,
- > a Controller HUB, outside of the incubator, that is able to control up to 6 digital microscopes via firewire,
- > a laptop computer with purpose made capturing and analysing softwares,
- > microwell (WOW) embryo culture dishes, connecting cables, manual.



PRIMO Vision System provides

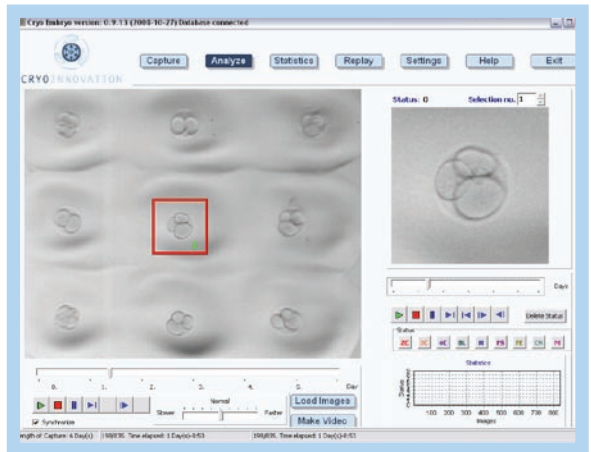
- > instant information on the screen of your laptop about the embryos inside of the incubator,
- > easy options for dynamic analysis of embryo development with a user-friendly software:
 - time-lapse video of the developing embryos
 - reliable detection of
 - 1) early cleavages, uneven cleavages
 - 2) fragmentations
 - 3) dynamic events
- > simple way to document and archive all moments of embryo development.



CRYOINNOVATION

Benefits

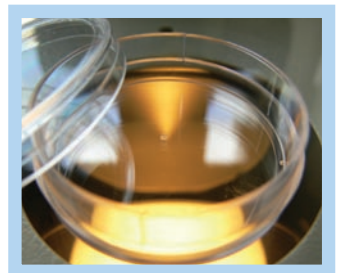
- > no additional investments (compatible with most traditional incubators),
- > one PRIMO digital microscope monitors all embryos of one patient,
- > one Controller with one laptop controls up to 6 PRIMO digital microscopes → step-wise expansion
- > the whole system (including the digital camera) is switched on only for the exposures
- > safe:
 - 1) no moving of embryos → no shear stress¹
 - 2) no heat accumulation
 - 3) no lubrication
 - 4) no continuous electric currents → no electro-smog
 - 5) minimal light exposure only for the exposures → no photo-toxicity
 - 6) simple structure → easy to sterilize



Microwell (WOW) embryo culture system*

{Factory made, CE and 1 cell MEA assays}

- > embryos can be easily identified and individually monitored
- > quantitative and qualitative improvement in embryo development²



¹ Xie et al. (2006): Shear Stress Induces Preimplantation Embryo Death That Is Delayed by the Zona Pellucida and Associated with Stress-Activated Protein Kinase-Mediated Apoptosis. *Biology Of Reproduction* 75, 45-55

² Vajta G, Körösi T, Du Y et al. (2008): The Well-of-the-Well system: an efficient approach to improve embryo development. *Reproductive BioMedicine Online*. 17(1), 73-81

* patented and patents pending